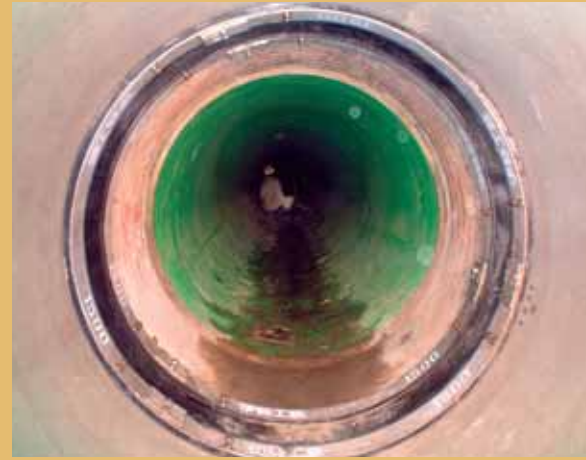


# 内面バンドによる管接合及び管補修事例

Examples of pipe connection and pipe repair with internal surface band

## 1 ダクタイル鋳鉄製マンホール管とPC管接合 (φ1500) Ductile cast iron manhole pipe and PC pipe connection (φ1500)



## 4 鋼製可撓管の電蝕漏水補修 (φ1500・水圧1MPa) Repair of water leakage on electric corroded steel flexible pipe (φ1500, water pressure 1 MPa)



## 2 鋼製マンホール管とPC管の接合 (φ1200) Steel manhole pipe and PC pipe connection (φ1200)



## 5 FRPM管の継手間隔260mm、段差59mmの接合 (φ2000) Connection of FRPM pipe with joint gap 260 mm, deviation 59 mm (φ2000)



## 3 破裂FRPM管の内面バンド管更生工法 (φ800・水圧0.5MPa) Internal Band rehabilitation method for burst FRPM pipe (φ800, water pressure 0.5 MPa)



## 6 被覆樹脂管のPC管継手部の亀裂補修 (φ1000) Crack repair of resin coated PC pipe joint (φ1000)

