

内面バンド試験

Internal surface band test

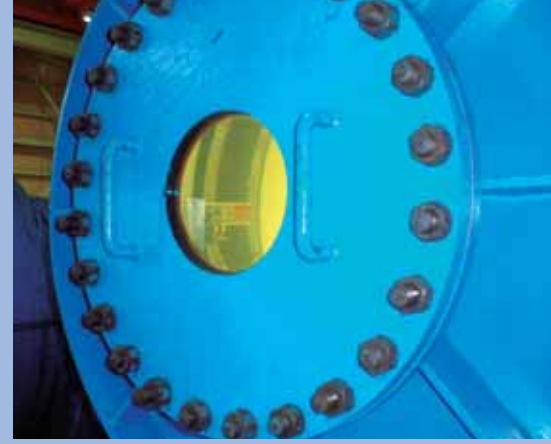
1 2方向水圧試験機 (曲げ角度左右5度、継手段差70mm)

2 direction water pressure test machine (Deflection angle right & left 5 degrees, Joint deviation 70 mm)

水圧試験機全景
Overall view of water pressure test machine



覗き窓から挙動観察
Behavior monitoring through a window



2 その他の水圧試験機

Other water pressure test machines

水圧0.8MPa曲げ角3度
Water pressure 0.8 MPa, bending angle 3 degrees



管継手段差200mm
Joint height difference 200 mm



3 内面バンドの内外水圧とゴムの膨れ出し状況

Effects of internal/external water pressure on Internal Band including rubber inflation

外水圧0.3MPaのゴムと外圧抵抗板
The rubber and external pressure resistance plate under 0.3 MPa external water pressure



内水圧0.5MPa、継手30mmのゴム膨らみ
The rubber inflation of joint length 30 mm under 0.5 MPa internal water pressure



4 水圧と補助板タワミ測定

Measurement of water pressure and support plate deflection

水圧0.8MPa継手間隔100mm
Water pressure 0.8 MPa with joint gap 100 mm



5 内面バンドゴム载荷試験

Internal surface band rubber loading test

内面バンドゴムの载荷重と圧縮量測定
Internal surface band rubber loading and compression amount measurement



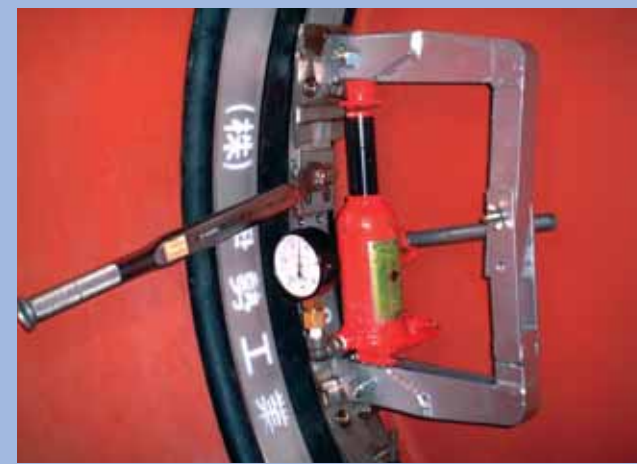
6 SUSバンド固定部の引っ張り強度試験と試験片

Tensile strength test of SUS band bolt connection and test pieces



7 拡張ジャッキ(蟹バサミ型)

Diameter expansion jack (claw type)



8 拡張ジャッキ(直押し型)

Diameter expansion jack (direct pushing type)

